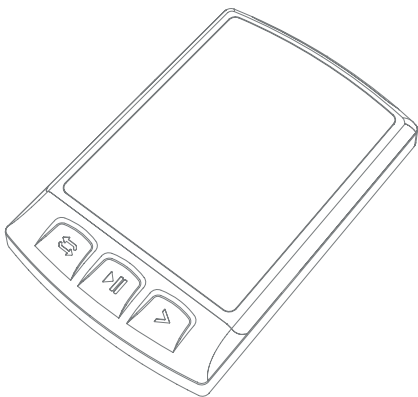


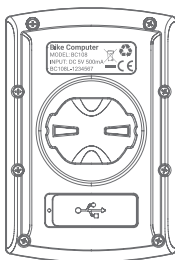


USER MANUAL

BIKE COMPUTER USER MANUAL



How to recognize your product ?



Find ID number marked on product: BC108-107XXXX



When the Sports Computer BC108-107XXXX is detected by CoospoRide APP, the APP displays Sports Computer ID number.

Button function

Left Button

- ↶ Short Press: Mark a new lap
- Hold for 2 seconds: Power off
(Power on: short press the button)
- (Short press in setting mode: exit / return and save the setting)

▶|| Mid Button

- Short Press: Pause / Continue (Short press to start recording after power on)
- Hold for 2 seconds: save the exercise record and exit the exercise
- (Short press in setting mode: enter the current setting / switch the number of digits)

➤ Right Button

- Short Press: Page turning
- Hold for 2 seconds: setting mode
- (Short press in setting mode: switch setting options / switch the numerical value)



Status Icons

88:88	Time
((()))	Accessory connecting status
▶	Under exercising
	Manual pause
Bluetooth icon	Connected with App by BLE
°C	Temperature
Battery icon	Battery level
AVG	Average
MAX	Maximun
MPH	Miles per hour
KMH	Kilometers per hour
▲ ▼	Increased&Decreased
♥ HRM	Heart Rate
🚲 CAD	Cadence
GRA	Gradient

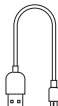
TIME	Sport time
ALT	Altitude
ODO	Odometer (Total distance)
DST	Distance
AST	Ascend Distance
CAL	Calories
LAP	LAP
PWR	Power
UTC	Time zone



Standard accessories



Main Device x1



Charging Cable x1



User Manual
x1



Standard bike
mount x1



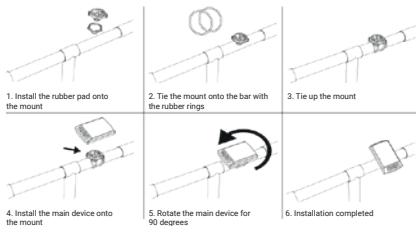
Rubber pad for
standard bike mount x1



Big size rubber
ring x2
Small size rubber
ring x2

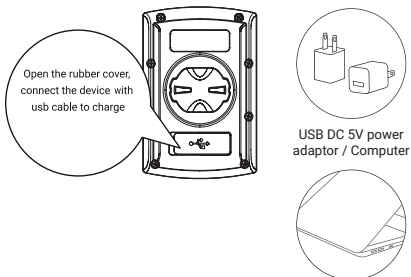
How to Install

Standard Mount Installation



Charging

1. Please charge the device before first time use;
2. Please use DC 5V power adaptor for charging;
3. During the charging, the battery icon will flash until fully charged;



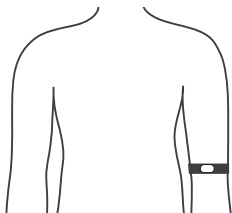
Auto Back Light

Auto Back Light

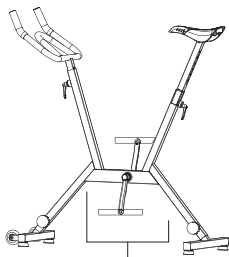
This device will automatically calculate the sun rise and sun set time, from the half an hour before sun set to half an hour after sun rise, the back light will be automatically lighten up, in the rest of the time, the back light will be turned off if no operation detected in 15 seconds.

Connecting with ANT+ Sensors

1 Please make sure the sensors are in wake-up mode (For example the heart rate monitor should be worn properly, for speed,cadence; and power meter, rotate the crank or the wheel to wake it up).

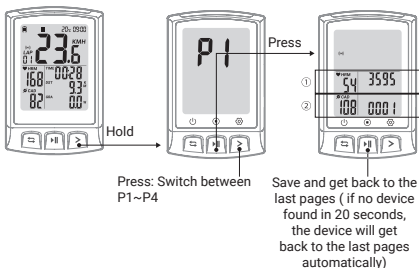


Wear it correctly, wake up
the heart rate monitor



For speed, cadence, and power meter,
rotate the crank or the wheel to
wake it up

- 1.1 Hold the ➤ to get into setting mode;
- 1.2 There are 4 settings pages available (P1~P4), the first page is P1 after entering the setting mode;
- 1.3 Press ▶|| to select to enter;
- 1.4 The bike computer automatically searches for ANT+ accessories, and automatically connects after searching for ANT+ accessories;
- 1.5 Press ↶ to save the found accessories and return. If no ANT+ accessory is found, the device will return to the last pages automatically (When the power device is connected during riding, the computer will display power data first, and when there is no power device, it will display GRA slope data) .



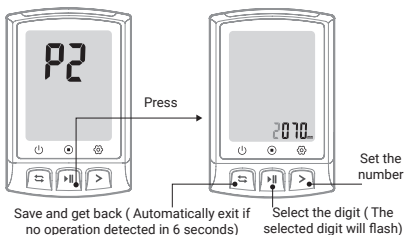
①: When the heart rate sensor (HW401L) is connected, the heart rate data will be displayed on the left side and the last 4 bits of the id will be displayed on the right side.

②: When the speed and cadence sensor(BK804L) is connected, the cadence data will be displayed on the left side and the last 4 bits of the id will be displayed on the right side.

Setting the Wheel Size

- 1.1 Hold the **>** to get into setting mode;
- 1.2 There are 4 settings pages available (P1~P4), press the **>** to switch to P2;
- 1.3 Press **||** to select to enter;
- 1.4 Press **||** to select the setting digit, press the **>** to set the numbers;
- 1.5 Press **↶** to save and exit (Automatically exit in 6 seconds if no operation detected).

This value determine the speed and distance equivalent calculation. Recommended to use 2070 but can be adjusted regarding your use.



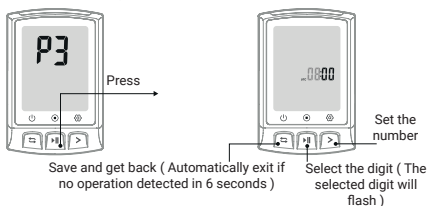
Common wheel size and circumference (Wheel size L (mm)

<u>12 × 1.75 935mm</u>	<u>20 × 1-3/8 1615mm</u>
<u>14 × 1.5 1020mm</u>	<u>22 × 1-3/8 1770mm</u>
<u>14 × 1.75 1055mm</u>	<u>22 × 1-1/2 1785mm</u>
<u>16 × 1.5 1185mm</u>	<u>24 × 1 1753mm</u>
<u>16 × 1.75 1195mm</u>	<u>24x3/4 Tubulaire 1785mm</u>
<u>18 × 1.5 1340mm</u>	<u>24 × 1-1/8 1795mm</u>
<u>18 × 1.75 1350mm</u>	<u>24 × 1-1/4 1905mm</u>
<u>20 × 1.75 1515mm</u>	

<u>24 × 1.75 1890mm</u>	<u>26 × 1-3/8 2068mm</u>	<u>650× 35A 2090mm</u>
<u>24 × 2.00 1925mm</u>	<u>26 × 1-1/2 2100mm</u>	<u>650 × 38A 2125mm</u>
<u>24 × 2.125 1965mm</u>	<u>26 × 1.40 2005mm</u>	<u>650 × 38B 2105mm</u>
<u>26 × 1.75 2023mm</u>	<u>26 × 1.50 2010mm</u>	<u>700 × 18C 2070mm</u>
<u>26 × 1.95 2050mm</u>	<u>27 × 1 2145mm</u>	<u>700 × 19C 2080mm</u>
<u>26 × 2.00 2055mm</u>	<u>27 × 1-1/8 2155mm</u>	<u>700 × 20C 2086mm</u>
<u>26 × 2.10 2068mm</u>	<u>27 × 1-1/4 2161mm</u>	<u>700 × 23C 2096mm</u>
<u>26 × 2.125 2070mm</u>	<u>27 × 1-3/8 2169mm</u>	<u>700 × 25C 2105mm</u>
<u>26 × 2.35 2083mm</u>	<u>27.5×1.75 2114mm</u>	<u>700 × 28C 2136mm</u>
<u>26 × 3.00 2170mm</u>	<u>27.5×2.125 2174mm</u>	<u>700 × 30C 2170mm</u>
<u>26 × 7/8 1920mm</u>	<u>27.5×1.5 2074mm</u>	<u>700 × 32C 2155mm</u>
<u>26 × 1(59) 1913mm</u>	<u>27.5×1.95 2146mm</u>	<u>700C Tubulaire 2130mm</u>
<u>26 × 1(65) 1952mm</u>	<u>29×2.1 2288mm</u>	<u>700 × 35C 2168mm</u>
<u>26 × 1.25 1953mm</u>	<u>29×2.2 2298mm</u>	<u>700 × 38C 2180mm</u>
<u>26 × 1-1/8 1970mm</u>	<u>29×2.3 2326mm</u>	<u>700 × 40C 2200mm</u>

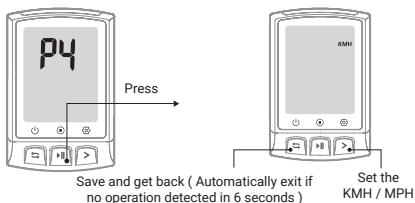
Time Zone Setting

- 1.1 Hold the > to get into setting mode;
- 1.2 There are 4 settings pages available (P1~P4), press the > to switch to P3;
- 1.3 Press || to select to enter (Default time zone: UTC/GMT+ 08:00);
- 1.4 Press || to select the setting digit, press the > to set the numbers;
- 1.5 Press ↶ to save and exit (Automatically exit in 6 seconds if no operation detected).



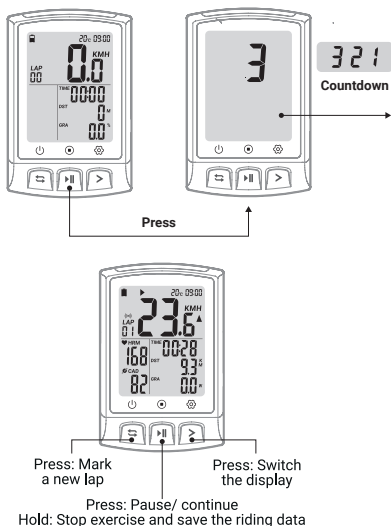
Setting Metric and Imperial Units

- 1.1 Hold the > to get into setting mode;
- 1.2 There are 4 settings pages available (P1~P4), press the > to switch to P4;
- 1.3 Press || to select to enter (Default time zone: UTC/GMT+ 08:00);
- 1.4 Press || to select the setting digit, press the > to set the numbers;
- 1.5 Press ↶ to save and exit (Automatically exit in 6 seconds if no operation detected).



Cycling

Turn on the device, press **▶||** to start an exercise and recording
(During the cycling, when the cycling speed is 0, the device will pause automatically, if no data get for speed, cadence and heart rate in 15 minutes the device will turn into sleep mode, press **↶** to resume)



*Bluetooth Connection & Timing function activate

1. Download CoospoRide in Google Play or App Store



To activate timing function, please scan the QR code above to download the App CoospoRide.

Once activate the timing function, you don't need to activate it again when the next tile use BC108-.

* Compatible with



iOS 9.0 version and above, iPhone 4s and above



Any Bluetooth 4.0 enabled Android device with Android 4.3 and above

Bind your bike computer

1- Open the APP CoospoRIDE, register and log in (click Agree on all permissions)

2- Click « Bind your bike computer » on the activity homepage.

3- Select BC107 and click Join search bike computer, and connect BC108-



Bind your bike computer

4- After successful connection, the timing function will be automatically activated to the bike computer BC108-.

5- Attention, the time on the screen now only shows the time of time zone 0. If you are in another time zone of the world, please go page 12 of this manual to set correct time zone.



Basic Parameters

Wireless: ANT+BLE

Display: FSTN Screen, 2.3 inch

Back Light: Yes

Lap Count: Yes

Storage Format: Fit

Water Resistance: IPX7

Weight: 68g

Language: English

Battery Capacity: 1000mAh

Battery Life: 450 hours for a single use after fully charged

Material: PC+ABS+TPU

Dimension: 81x54x20.7 mm

Accessories Supported: ANT+ peripherals (Heart Rate Monitor (HW401 collection), Speed and Cadence 2 in 1 Sensor (BK804 collection)

File Transfer: Bluetooth (Specified App Compatible)

Attentions

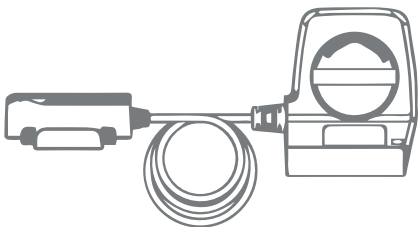
The water resistant level of the bicycle computer is IPX7. It can be used in the rain if you close the protective cover on the back tightly. It is recommended to take down the bicycle computer and put it into waterproof bag if it rains heavily.

Responsibility Disclaimer

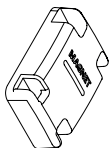
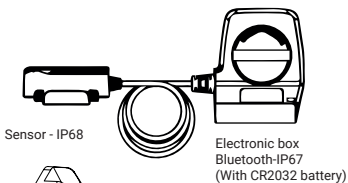
- The information contained in this manual just for reference. The product described above may be subject to alteration owing to the manufacturer's continuing research and development plans, without making an announcement in advance.

- We shall not bare any legal responsibility for any direct or indirect, accidental or special damages, losses and expenses arising from or in connection with this manual or the contained product.

***USER MANUAL
SPEED AND CADENCE
2 IN 1 SENSOR KIT
SENSOR KIT BK804L***



Device Overview



Detection magnet x1



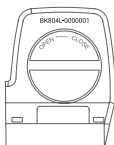
3*Blue+3*Silver



RubberPads & Ties

Short cable ties*6
Long cable ties*6

How to recognize your product ?



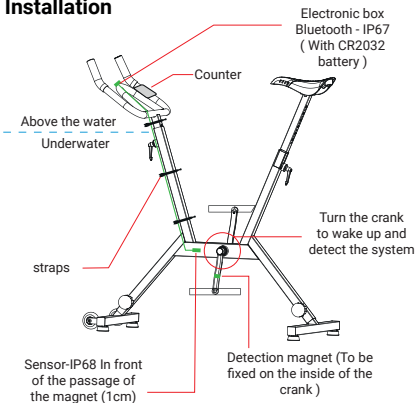
1- Find ID number marked on product:
BK804L-000XXXX

2 -When the Sensor BK804L000xxxx
is detected by CoospoRide APP, the
APP displays sensor ID number.



3- When the Sensor BK804L000xxxx is
detected by Sports COmputer, the Sports
Computer displays the last 4 digits of the
sensor ID number xxxx.

Installation



1 - Attach the magnet to the crank arm (interior side) By using cable ties **(A)**

2 - Insert cable ties through the two mounting slots of the sensor, wrap the cable ties around your bike frame and pull the cable ties snug. Or use 3M tapes to paste bike surface and sensor bottom palte. **(C)** Magnet should be close to the sensor, working distance: 0.8-1.2cm

3 - Install the Sport Computer BC108 collection on the bike handlebar with BC108 accessories and cables ties. **(B)**

4 - Then install blue and silver straps the bike frame, to avoid BK804L Sensor wire get off during the movement.



Replacing the battery

Use CR2032 type batteries. The battery life is 500 hours

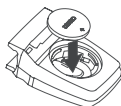
- 1 To open the case, unscrew with a coin.



- 2 **Remove the battery**
Separate the device
Dispose of used batteries
immediately in accordance with
local regulations



- 3 Replace the battery with the (+) side up. Theb replace the cover of the case



To avoid danger, keep new and used batteries out of the reach of children. Out of the reach of children. If swallowed, especially by a child it can quickly cause internal chemical burns and death. If you suspect ingestion, seek medical attention immediately consult a physician.

Compatible applications




Coospo ride



Also compatible with
STRAVA | ZWIFT

FAQ

If the cadence or speed information is missing, check the position of the installed magnet and sensor. The magnet must pass in front of the sensor with a maximum distance of 1,6 cm.

Ant+ and BLE capabilities allow for wireless connection to both smartphones and the meter at the same time or separately.

Works with over 50 applications, including Wahoo, Strava, MapMyRide, IpBike...

Specifications

Weight	36.90g	Battery life	500 hours
Wireless Transmission	Bluetooth 4.0 & ANT+	Battery type	CR2032
Transmission Distance	Bluetooth 4.0:10m ANT+: 6m	Water Proof	IP68

Suitable model



iOS7.0 system version above, iPhone 4s or later



Any Bluetooth 4.0 enabled Android device with Android 4.3 or later

Disclaimer

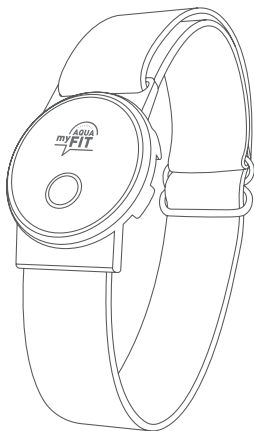
Specifications are subject to change without notice, due to the manufacturer's continuous development program.

2 years warranty. Except for wearing parts (battery,battery, clamp or hanging strap...)

USER MANUAL

ANT+BLE+HEART RATE

ARMBAND



Product Introduction

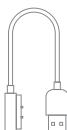
Thank you for purchasing our ANT+ & BLE heart rate armband, this product is one of the heart rate monitors of our company, which transmits the real-time heart rate data through Bluetooth or ANT+ to heart rate receiving device, sports and health App helping you to manage your exercise intensity scientifically. This user manual will help you to use the product better, please keep it for reference.

* (This product is for sport purposes only and it is not meant to replace any medical advice).

Product Accessories



Heart Rate
Sensor & Armband



Charging
Cable



User
Manual

How to recognize your product ?



Find ID number marked on
product: HW401L000XXXX



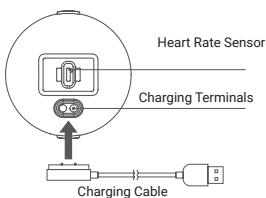
When the Armband
HW401L000XXXX is detected
by CoospaRide APP, the APP
displays Armband ID number
XXXX.



When the Armband
HW401L000XXXX is detected
by CoospaRide APP the APP
displays Armband ID number
XXXX.

Charging

- Please charge the device before first time use;
- Please use DC 5V power adaptor for charging;
- When charging, LED will flash green and red alternately. Green light stay one means fully charged.



Connect USB DC 5V power adapter or computer USB

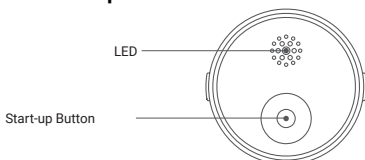


The product has a built-in battery.

Do not throw the product into a fire.

Please select an adapter that meets the rated voltage of the device to charge the device to avoid damage to the device.

Function and Operation

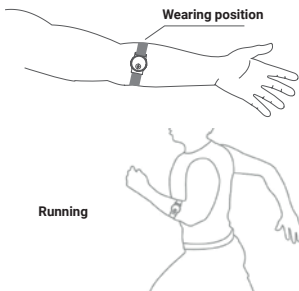


Turn-on: Press the start-up button, the LED light will flash blue quickly until the heart rate was found, then the light will flash slowly. Red light indicates the device is in a low battery state and needs to be charged.

Turn-off: Press the start-up button again, the LED will flash red and enter the shutdown state.

Wear the Heart Rate Sensor

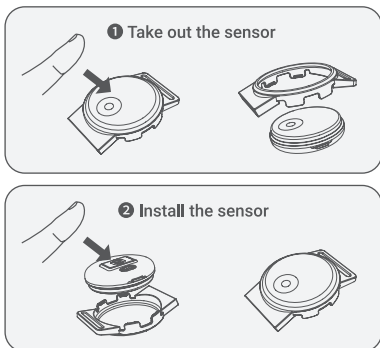
Wearing the armband on the upper arm or forearm before using. It should not be too tight but avoid the sensor could move when training.



Heart Rate Sensor Disassembly

Press the front of the sensor to take out the sensor (Figure 1);

Aligned with the raised position and stuck into the groove position to install the sensor (Figure 2)



Connection

Compatible with most third party fitness Apps (Strava, CoospoRide...).

ANT+ connection to fitness equipments (Treadmill / sport watch / bike computer, etc...), detailed method reference to the corresponding equipment setting instructions;

This product Bluetooth and ANT+ transmission could work simultaneously.

Applicable models



iOS 9.0 version and above, iPhone 5s and above.



Any Bluetooth 4.0 enabled Android device with Android 4.3 and above.

Basic Parameters

Product size : 35,2 x 34 x 10,9 mm

Transmission : BLE & ANT+

Host weight : 7,7g

Power : Rechargeable lithium battery

Battery life: 20 hours for continuous heart rate monitoring

Autonomie à l'eau : IP67

Température : 0°C~ 45°C

Disclaimer

The information contained in this manual is for reference only. The product described above may be subject to alteration owing to the manufacturer's continuing announcement in advance.

We shall not bear any legal responsibility for any direct or indirect, accidental or special damages, losses and expenses arising from or in connection with this manual or the contained product.

USER MANUAL AQUAFIT PHONE HOLDER



Statement:

Thank you very much for choosing this product ! Before using this product, please read the manual carefully. All information in this manual may change without notice. The Company has the right to change the information at any time without prior notice.

Installation Method



1. Ouvrir la boucle à dégagement rapide et l'installer dans la position appropriée



2. Install the base and attach the holder.



3. Ajustez l'angle et l'installation est terminée (Faire pivoter (la base) de 45 degrés jusqu'à entendre un clic. L'installation est terminée. Vous pouvez ajuster l'angle à votre convenance)



Phone installation Method

Open the bracket waterproof box, pull the buckle outwards, put the mobile phone, cover the lid and fasten the buckle.

M18S/Installed size : 168 x 83 x 10.5 mm



Product Structure Display



Instructions for use

Thank you for choosing this mobile phone holder. For the sake of safe and convenient use of this product, please read the product manual carefully before use and keep it properly for reference.

This product is a convenient mobile phone holder, quick installation, easy to take and put waterproof life, rainy riding, touch screen design, can let you easily enjoy music navigation directions during the cycling process, random charging.

Support 360 degree universal Angle adjustment, touch screen operation, rainy day riding

Suitable for handlebar, base diameter : 22mm 25.4mm 32

Waterproof level : IP67

MEMO

